

OTAGO COMMUNITY HOSPICE

ANNUAL REPORT 2021



OUR HOSPICE SERVICE ENABLES PEOPLE TO LIVE THEIR LIVES.

PATIENT AND WHĀNAU RESPONSES TO OUR HOSPICE SERVICE IN 2021

“I have never had better service from any
organisation–service agency in all my years of experience.”

“Just a huge Thank You!! We would not have got this far at home
without your support and guidance, especially with medications.
You have given us confidence for what may be ahead.”

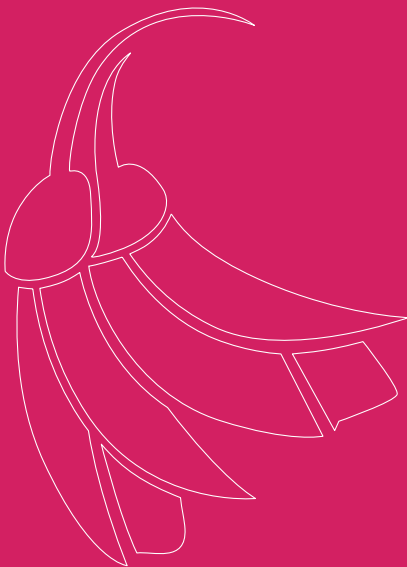
“The mental support has been great and has helped us
to start moving forward and living in the now.”



DUNEDIN | OAMARU | MOSGIEL | MILTON | BALCLUTHA | ALEXANDRA | CROMWELL | WANAKA

CONTENTS

	PAGE
OTAGO COMMUNITY HOSPICE VISION AND VALUES	2
OUR YEAR – CEO GINNY GREEN	3 - 5
CHAIRPERSON'S MESSAGE	6
FINANCE AND AUDIT COMMITTEE REPORT	6
2020/2021 SERVICE OVERVIEW	7
INCOME VS EXPENDITURE	8
HOSPICE SHOPS	9
VOLUNTEERS	10
FUNDRAISING	11 - 12
TRUSTS AND FOUNDATIONS	13
CORPORATE SUPPORTERS	14
NATIONAL PARTNERS	14
FINANCIAL REPORT	15 - 18
COMMUNITY SERVICE CLUBS	20



VISION & VALUES



OUR VISION

TŌ MĀTOU WHAKAKITENGA

**Te pairuri tāngata
i te wā o te ora,
i te wā o te mate.**

Supporting people
with terminal illness to
live and die well.



OUR PURPOSE

TŌ MĀTOU PŪTAKE

We provide care for people
with terminal illness,
enabling them to live their
lives as fully as possible.
We work in partnership
with our community,
offering education,
support, care to family,
whānau, carers and
health and social service
professionals, through
a patient's illness
and following death.

We support our patients
wherever they want to be –
that may be in their home,
in a residential care home
setting or, if their needs
are complex, within our
inpatient unit.

Where we can, we aim
to keep people in
their environment,
symptom-free, for as
long as possible.

We affirm life and believe
in making the most of it,
neither hastening nor
postponing the natural
progression of death.



OUR APPROACH

TA MĀTOU MAHI

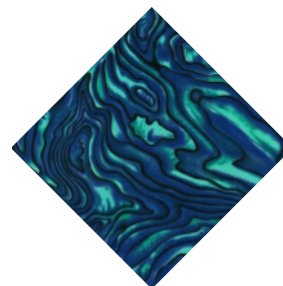
Te Whare Tapa Wha
The Four
Cornerstones
of Health

Te Taha Hinengaro
Mental Wellbeing

Te Taha Wairua
Spiritual Health

Te Taha Tinana
Physical Health

Te Taha Whānau
Family Wellbeing



OUR VALUES

Ō MĀTOU UARA

Te whakamiha
Respect

We embrace and honour
the individual needs of all
those we deal with.

Te ngākau nui
Compassion

We walk alongside those
we interact with and
are empathetic and
life affirming.

Te ngaio tanga
Professionalism

We are accountable
for our individual
and collective actions,
using our expertise
with integrity.

Te mahi ngātahi
Inclusivity

We empower our
patients and whānau as
partners in their care.

We value working
collaboratively with
health professionals
and with the
wider community.

OUR YEAR AT A GLANCE

The Otago Community Hospice employs a continuous impact model to advance outcomes for those who are dying in Otago. This is what we are all about. When we see a change in our environment, within our patient population or with healthcare partners, we initiate change. We can pivot quickly because of our tight structure and the strength of our team, because we have strong relationships across our region and because of the committed support of our community.

For a wrap up of FY21, I have pulled out key highlights from the year gone by which reflect our model of continuing improvement.

Enjoy.

GINNY GREEN

CHIEF EXECUTIVE OFFICER



ASSISTED DYING / EUTHANASIA.

In July 2020, the Hospice Board mandated that Otago Community Hospice would be a euthanasia-free service, should the *End of Life Choice Act* pass into law following the October 2020 referendum. A fundamental principle of hospice and palliative care is to neither hasten nor postpone the natural progression of death. While we acknowledge that the new legislation on assisted dying raises many emotional, ethical and moral issues for our patients, whānau, community and our staff, it does not change how we practice. We will continue to provide the same comprehensive, holistic care to patients/whānau no matter what a patient's decision is around euthanasia. The Hospice publicised its policy so that stakeholders, patients and the community understood its position before the referendum, and after the Act was passed into law.

UPPER CLUTHA HOSPICE TRUST PARTNERSHIP FLOURISHES.

Our growing partnership with the Upper Clutha Hospice Trust has been crucial to our service development in Central Otago. This group of committed individuals have contributed a significant grant to our Wanaka service for three years running. One of their trustees, Ross Parry, joined our board at the end of 2020, deepening our partnership further. The Upper Clutha Hospice Trust also fund the Palliative Care District Nurse in Upper Clutha, who our team works with closely, improving outcomes for patients in the Upper Clutha. We are looking forward to collaborating more with the Trust in the future.



COVID TRIGGERS ADAPTATION – OUTSTANDING IPU AGILITY.

While the south has avoided COVID-19 cases this financial year, we have still felt the impact across our services as we have bounced into other levels in support of the team of 5 million. Our team, as always, has been willing and able to adapt as needed, ensuring patients and their families still get the care they need, when they need it. Our inpatient unit has had to be particularly agile, managing constant changes to access and visitor limitations, often facing challenging situations with families. The team have flexed with every change competently and with compassion.

AGED RESIDENTIAL CARE SUPPORT SERVICE SUCCESS.

We are immensely proud of what our Aged Residential Care team have achieved over the last five years. The team of nurse practitioners and nurse specialists work alongside staff in hospital-level aged care facilities throughout the Otago region ensuring the hospice philosophy is incorporated into all areas where people are receiving palliative care. We developed the service after intensive consultation with the aged care sector, where there was a very clear message that facilities felt they could use some support in end-of-life care for the very frail elderly. An audit last year gave this service a resounding tick of approval, with the programme being exceptionally well received, impacting on the wellbeing of the patients and their families, taking pressure off hospitals and building confidence in staff.

OUR YEAR AT A GLANCE CONTINUED

ST JOHN COLLABORATION – TOGETHER AT THE TOP OF THE CLIFF.

Over the last two years, a collaboration project we put in place with St John Ambulance has seen many vulnerable palliative patients avoiding emergency department (ED) admissions. Ambulance and hospice staff realised that these ED transfers could be avoided if a call was made to hospice. In 2018 the two organisations developed a fridge magnet system for St John ambulance officers to easily identify patients being cared for by the hospice. Ambulance staff can call the hospice on our 24/7 phone line and our staff can provide guidance with symptom management and assistance in determining the most appropriate venue of care for the patient. A recent audit over an eight-month period showed that 29 mostly after-hours calls were received by Otago Community Hospice from St John. Of these, 21 resulted in ED transfer avoidance. A positive result for medically fragile patients, which also has the potential to alleviate the burden on our ED.

COMMUNITY TEAM TAKING OFF.

This last year has seen a huge amount of change in our urban community team, with outreach continuing to grow. New team leader Elaine Horn was joined by Sandra Knopp from Fertility Associates and Tracy-lee Fisher who came from the university and continues to work a day a week in paediatric outpatients. Katrina Smith and Marc Sescon moved from IPU to the community team, with Katrina joining the Dunedin team and Marc taking on the South Otago role. Shireen Tresslor transferred from her community care role to a counselling role, and we welcomed Sue Lewis to a second counselling role. We now find ourselves in a solid position to start working towards our collaborative service improvements.



CENTRAL OTAGO EVOLUTION.

With Central Otago patient numbers continuing to grow, we have continued to adapt. We have formalised leadership roles with Christine Pacey now our team leader (operations) and nurse practitioner Louisa Ingham as the team leader (clinical). Palliative education and the Kowhai Programme for carers are now delivered from our Cromwell base in a more responsive manner to the region's needs. Changes will continue with the Central team looking to collaborate with District Nurses on extended joint care for palliative patients in the community.



OCH LICENCING AUDIT.

To round the year out, in May we received terrific validation for our improvement model via our licensing audit. Auditors were impressed with our ongoing commitment to excellent patient care and to continual quality improvement. We received three *Continuous Improving Rating* commendations for our:

- Volunteer Programme - they were hugely impressed with our whole volunteer process
- Kowhai Programme- notably the adaption of the service to include rural population
- Infection Control - in particular the COVID-19 response

Other Key Points

- impressed by how responsive we are to change and how ready to adapt
- felt the team culture was a very happy one and staff interviewed were passionate about their work
- they found the ARC support service impressive and very innovative
- excellent patient documentation
- fantastic and effective quality systems, audit programme and reporting
- excellent communication

We achieved a four-year certification following the audit, which is a valuable endorsement of our service provision.



TE HAU MOSES LEAVES A LARGE GAP TO FILL.

We said a very sad farewell to Te Hau Moses – our Kāitakawaenga – who died in April 2021. Over her five year tenure, Te Hau greatly improved our ability to serve Otago's Māori community. Te Hau was an advisor, a colleague and a dear friend who is deeply missed. Her contribution to hospice was huge and her legacy lives on in all that we do. During Matariki – we held a memorial for Te Hau with the planting of three kawa kawa in our garden to honor Te Hau's significant influence on our service.



Kia hora te marino
Kia whakapapa pounamu te moana
Kia tere te kārohirohi i mua i tō huarahi

May the calm be widespread
May the sea glisten like that of greenstone
May the shimmering light guide you on your journey

CHAIRPERSON'S REPORT

It is my pleasure to present the 35th Annual Report of the Otago Community Hospice Trust Board.

I would like to acknowledge and thank our staff and volunteers for their efforts over the year, despite the economic and personal challenges arising from COVID-19. Once again COVID-19 has dominated the year as we have moved in and out of lockdowns. We are currently operating in level 2. The effects of this will continue to be felt for some time to come.

The unpredictable nature of COVID-19 has required our staff to be flexible and nimble in managing the changing circumstances. Management continue to stringently follow COVID-19 protocols and the advice of the Ministry of Health.

This time was particularly hard for families who could not visit their loved ones during the various lockdowns. The protocols put in place by management were effective but also took into account the impact this was having on families. I want to acknowledge how difficult managing that distress has been for staff.

Once again we are thankful for the support we received from the Gordon Allen Foundation Trust. It is reassuring knowing we have this trust to fall back on in situations like COVID-19.

I am also pleased to report the support from our communities has once again exceeded our expectations, so once again thank you for the generosity you have shown us.

The Hospice operating revenues are generated through a contract with the District Health Board, but most noteworthy are the significant contributions that stem from our extremely generous community, donors, sponsors, corporate supporters, service clubs, businesses, shoppers, community groups and our amazing volunteer work force who all contribute their time, expertise and financial support throughout the year.

I am pleased to welcome two new trustees, Donna Matahaere-Atariki and Wendi Raumati, and look forward to their respective contributions to the Board.

Jack Gorge, who started with us as a Board intern from Ignite Consultants and then a trustee, has taken up a legal appointment in New York. Jack has made a big contribution in his time on the Board. We wish him well in his new career path.

On behalf of the Board, I would like to thank all our exceptional staff and volunteers – for all they do to ensure our patients are supported to live and die well.

Finally, I would like to thank my fellow Board members, Ginny and her management team for the advice and support given over the past year.

I look forward to working with you all in the coming year.



STUART MCLAUCHLAN
CHAIRPERSON

HOSPICE FINANCE FINANCIAL REPORT FY2021

The Hospice (excluding the Gordon Allen Foundation Trust) recorded a significant net surplus of \$1,123,176 for the full year 2021. This is the largest surplus the Hospice has ever had over its 30-year history. This result is largely due to the COVID-19 wage subsidy, which was used in the previous year but accounted for in this financial year and relief funding from the government as a result of the COVID-19 disruption. The result also reflects a year of very cautious spending.

So while FY2021 was marked by continuous disruption and inflationary pressures starting to influence parts of the operation, the end result was tremendous. This is an excellent position to be in as the Hospice looks ahead to increased costs in FY22 with rising inflation impacting on consumable products and wages, alongside anticipated nurse's back-pay. These will affect the cost side of the operation considerably over the coming 12-24 months.

Pleasingly we saw a recovery in shop income across the year and while the second lock down surge in revenue from shop income didn't eventuate to the same extent as the first lock down the importance of this network is vital for the ongoing funding of the Hospice. The shops continue to evolve and develop efficiencies and scale, credit goes to the respective management teams for their astute stewardship.

We live in challenging times; the Hospice is in good financial heart and has the competency to manage and navigate through this period. I would like to acknowledge the ongoing support of our local community, and our donor base. Lastly, I would also thank our committed staff and management, their commitment to both containing costs while providing palliative care to the community at the highest standard should make the Otago community very proud.



PETER MCINTYRE
CHAIRMAN
FINANCE COMMITTEE

SERVICE OVERVIEW

<p>Total number of patients on programme in the year</p> <p>761</p>	<p>Average number of patients on programme at any one time</p> <p>230</p>	<p>Patients by disease</p> <p>78% 22%</p> <p>CANCER NON-CANCER</p>
<p>Admissions to the IPU</p> <p>181</p>	<p>Community visits</p> <p>3,343</p>	<p>Phone contacts</p> <p>9,038</p>
<p>Family support contacts</p> <p>2,631</p>	<p>Kilometres driven</p> <p>420,000</p> <p>APPROXIMATELY</p>	<p>Kowhai Programme (Carer education)</p> <p>294*</p>

Student Placements at OCH
NURSING – 4 GP INTERNS – 6

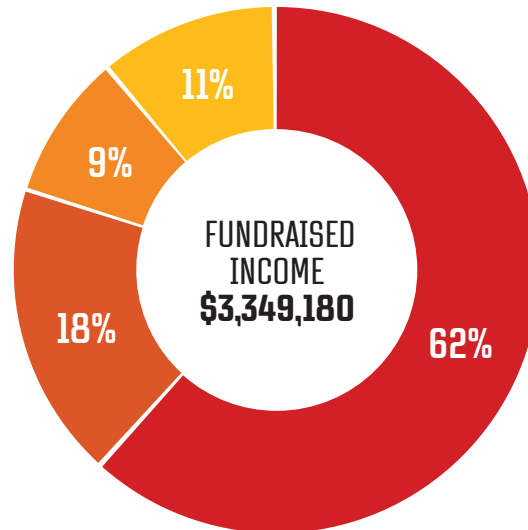
Students – palliative education
NURSING – 156 MEDICAL – 400 PHARMACY – 131
NETP NURSES (NEW ENTRY TO PRACTICE) – 60

Palliative Care for Care Assistants Education
22* ATTENDEES THROUGHOUT OTAGO

Syringe Driver training
200* ATTENDEES THROUGHOUT OTAGO REGION

* NUMBERS ARE DOWN DUE TO COVID-19 CANCELLATIONS OF NUMEROUS PROGRAMMES.

INCOME VS EXPENDITURE



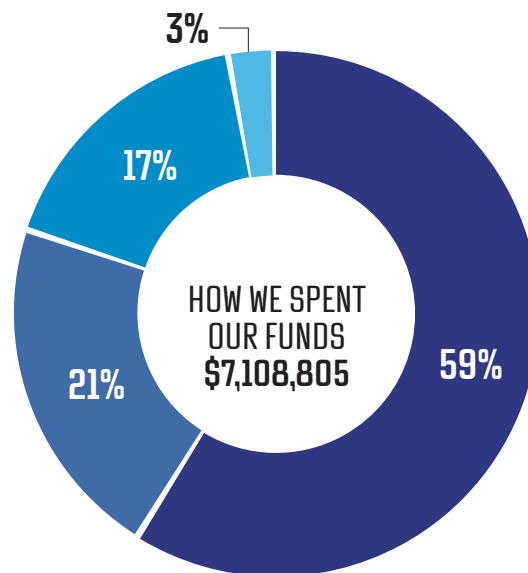
Shop Income Donations Events Grants

FUNDRAISING COSTS

\$1,187,249

DHB CONTRACT

\$4,203,188



IPU & Community Teams Support Costs Fundraising Costs External Education

VOLUNTEER CONTRIBUTION

\$1,000,000

HOSPICE SHOP NETWORK

It was a year of consolidation and, despite COVID-19, record turnover for the six hospice shops.

This year our shop network contributed \$1.1 million directly to hospice services – up by over \$350,000 on the previous financial year.

December 2020 saw our Alexandra shop move into a much larger premises and as a result the shop is thriving.

Our shop teams have grown as our turnover increases and the shops become busier. We have increased our staff numbers by eight to make a total of 24 staff – many of whom work part-time. We also have increased our volunteer numbers and now have 234 volunteers in our shops.

We were lucky to attract a DCC waste minimisation grant in 2020, and we have implemented many new systems with improved in-house recycling systems and signage educating our donors about suitable donations across all stores.

In June 2021, 127 Vogel St's basement tenant moved out, creating a new space for the shop to develop. Called "The Basement", this space will open in September selling a mixture of items from garage tools to surplus clothing and books. The initiative will help significantly with our waste minimisation as well as offering customers even better bargains.

HOSPICE SHOP HIGHLIGHTS

461 AVERAGE SALES PER DAY

\$13 AVERAGE SALE VALUE

1,400 SEPARATE ITEMS SOLD PER DAY

OVER 25,000 DONATIONS

490,000 ITEMS SOLD FROM SHOPS:

\$2,100,000
TOTAL SALES VALUE



VOLUNTEERS

Our volunteers continue to be a crucial part of Otago Community Hospice's operation, with 368 volunteers across all parts of the hospice.

We celebrated a significant milestone this year with our volunteer workforce contributing nearly a million dollars of resource to hospice service provision via roles in the shops, after hour receptionists, weekend housekeepers, kitchen assistants, gardeners and patient biographers.

Hospice volunteers contribute 929 hours every week, and that's not counting all the volunteers who help us with our street appeal, the trailer raffle, working bees and various other contributions throughout the year.

We continue improving our induction and volunteer training to ensure that we are providing the best possible volunteer experience for all our volunteers and this work was validated in our licencing audit this year where the volunteer programme received a commendation.



2020/21 CELEBRATION OF SERVICE.

30 YEARS

Heather Hore	Gardening
Marie Hansen	Kitchen

20 YEARS

Jane Ashman	Reception/ Housekeeping
-------------	-------------------------

15 YEARS

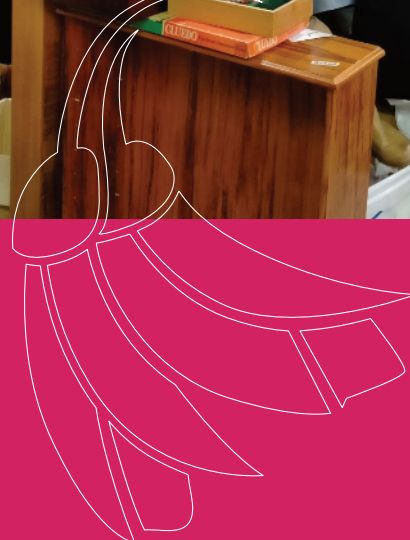
Heather Reid	Reception
Maureen Baty	Gardening

10 YEARS

Jenny Wills	Mosgiel Shop
Noeline Te Raki-Hill	Mosgiel Shop
Jean Young	Mosgiel Shop

5 YEARS

Christine Sutherland	Mosgiel Shop
Kerry Sizemore-George	Kitchen
Colleen Ireland	Mosgiel Shop
Phyllis Sutton	Kitchen
Gwenda Fretwell	Mosgiel Shop
Jenny Kennedy	George St/Vogel St Shop
Danny Locher	Bond Street/Vogel St Shop
Hayden Duckworth	Bond Street/Vogel St Shop
Sue Partel	Mosgiel Shop
Cheryl Minehan	Cromwell Shop
Noeleen Lippert	Kitchen
Chris Twist	Bond St/Vogel St Shop
Lorraine Jolly	Mosgiel Shop



FUNDRAISING

Fundraising has been majorly disrupted by COVID-19 over the last year with many events cancelled, including the Street Appeal which is a significant fundraiser. However, our community has come to the rescue several times across the year, filling in fundraising gaps through inventive initiatives and incredible commitment.



Glenn Sutton (third from right), with his awesome support crew in tow, ran for 100+ hrs from Milford Sound to Mount Cook. He covered over 580km battling extreme fatigue and raised over 20k for Otago Hospice.



Ashleigh Thompson (right) whose mother was on the Hospice service in 2019 – pulled together a huge cheese roll mission, raising more than \$13,000 with help from a large number of supporters including OceanaGold Macraes Operation.



BNI chapters came to the rescue this year on several fronts. Seen here are BNI Larnach and BNI Mosgiel, who alongside BNI Aspire, supported our Vouchers for Families initiative which sees New World vouchers distributed by our social workers to those in need.

FUNDRAISING CONTINUED



\$27,000

The **Rotary Club of Taieri** and **Taieri Lions Club** Annual Winter Crop Competition returned this year, and their incredible Charity Auction event raised a record-setting \$64,500. Hospice was gifted **\$27,000**.



\$3,850

When our Street Appeal was cancelled, **Nik Wild** (right) from **Knox Pharmacy** coordinated every single pharmacy in Dunedin to collect for us over the weekend, and raised **\$3,850**!



\$15,172

The second **Central Otago Dinner Club**, sponsored by **Pioneer Energy** and held at The Packing Shed in October 2020 raised **\$15,172** for the Central Otago service.



\$6,186

The annual **Harcourts 'Highland Gathering'** took place in Alexandra in May and saw 120 agents selling The Good Oil Products and making **\$6,186** in 60 minutes for hospice services in Otago.



\$17,000

Otago Community Hospice's much-loved degustation, created by the team from **Titi** and sponsored by the **Quartz Reef Estate**, snuck in this year and raised **\$17,000**.

TRUSTS AND FOUNDATIONS

THIS YEAR, WE HAD VALUABLE AND TIMELY SUPPORT FROM THE FOLLOWING TRUSTS AND FOUNDATIONS:

Gordon Allen Foundation Trust

The Lion Foundation

Central Lakes Trust

DCC Waste Minimisation Community Project Grant

The Bendigo Valley Sport and Charity Foundation

Goodwill Charitable Trust

Southern Trust (Now the Aotearoa Gaming Trust)

Vero Insurance Hardship Grant

Foodstuffs Community Trust ReSTART Grant

DCC Rates Relief Grant

The Trusts Community Foundation

Dunedin Casino Charitable Trust

Upper Clutha Hospice Trust

JN Lemon Charitable Trust

Marsh Family Trust

Lottery Otago / Southland Community

Jessie Hill Charitable Trust



THANK YOU TO OUR AMAZING PARTNERS

CORPORATE SUPPORTERS

We're committed to building and retaining long-term, mutually beneficial partnerships with our corporate supporters – these businesses all support the values and philosophy of the Otago Community Hospice.

Otago Community Hospice is a much beloved organisation that has touched thousands in our community and having brand association with Otago Community Hospice continues to be a strong and valuable asset.

CORPORATE SUPPORTERS TOTAL
\$202,663



Mercy Hospital Ltd



Preens/Apparel Master
Mackies Hotel
Mitre 10 Mega Dunedin
Pioneer Energy



Kaans Catering Supplies Ltd
Cardrona Distillery
Unichem Knox Pharmacy
Pacific Finline
Cooke Howilson Dunedin
Total Carpet Services
Mornington Taphouse
Oceana Gold
Otago Daily Times
Emerson's Brewery



Harcourts Oamaru
Fresh Choice Green Island (Moyley)
Quartz Reef
Speedprint
Firebrand
Foleys

NATIONAL PARTNERS

Otago Community Hospice is proud of the National Partnerships that we hold very closely here in Dunedin.

As part of Hospice NZ, we are privileged to have the ongoing support of national partners:
BNI, House of Travel and Harcourts,
and national supporters of Hospice:
Craigs Investment Partners and Dilmah.



Harcourts



BNI®



FARMERS

Because of COVID-19, we weren't sure if the Farmers Campaign would be happening in 2020 so we were delighted when the Farmers teams in Oamaru and Dunedin kicked off the campaign on November 19th. A total of \$33,383 was raised through their add-a-donation campaign, alongside selling beautiful Christmas baubles designed for Farmers.

TOTAL RAISED

\$33,383



OTAGO COMMUNITY HOSPICE TRUST

Notes to the Summary Consolidated Financial Statements for the year ended 30 June 2021

These are the summary consolidated financial statements of Otago Community Hospice Trust (the "Trust") for the year ended 30 June 2021. The specific disclosures included in these summary financial statements have been extracted from the full consolidated annual financial statements dated 18 November 2021. The full consolidated annual financial statements were approved for issue by the Trustees on 18 November 2021 and have been prepared in accordance with Tier 2 Not-For-Profit Public Benefit Entity (PBE) Financial Reporting Standards as issued by the New Zealand External Reporting Board (XRB). They comply with New Zealand Equivalents to International Public Sector Accounting Standards Reduced Disclosure Regime (NZ IPSAS with RDR) and other applicable Financial Reporting Standards as appropriate to Not-For-Profit Public Benefit Entities.

This summary financial report cannot be expected to provide as complete an understanding as provided by the full financial statement of the financial performance, financial position, cash flows statement and notes to the financial statements of the Trust.

A qualified audit opinion has been received on the full consolidated financial statements for the year ended 30 June 2021. The modification is a qualification that is common with other entities of a similar nature, where control over donations, fundraising and other similar revenue prior to being banked is limited. A copy of the full Trust financial statements for the year ended 30 June 2021 can be found online at www.otagohospice.co.nz. These summary financial statements have been audited for the year ended 30 June 2021, found to be consistent with the full financial statements. An unqualified audit opinion has been issued.

These summary financial statements were approved for issue by the Trustees on 18 November 2021.

Basis of Preparation

Otago Community Hospice Trust is a public benefit entity and is a charitable trust incorporated under the Charitable Trusts Act 1957 and a registered charity under the Charities Act 2005. The 2021 summary consolidated financial statements comprise Otago Community Hospice Trust and its controlled entity, The Gordon Allen Foundation Trust (the "Foundation"). The Foundation was previously called Otago Hospice Foundation Trust but changed its name on 29 May 2019 to recognise the contribution from Gordon Allen.

These summary consolidated financial statements and the accompanying notes summarise the financial results of activities carried out by Otago Community Hospice Trust and its controlled entity. The Trust provides hospice services in Otago and the Foundation receives and invests funds to provide specialist palliative care of the terminally ill in the province of Otago.

These summary consolidated financial statements comply with PBE FRS 43: Summary Financial Statements. The presentation currency is New Zealand dollars, rounded to the nearest dollar.

The full financial statements upon which these Summary Financial Statements are based, have been prepared to comply with Public Benefit Entity International Public Sector Accounting Standards Reduced Disclosure Regime ("PBE Standards RDR") and other applicable financial reporting standards as appropriate that have been authorised for use by the External Reporting Board for Tier 2 Not-For-Profit entities.

The accounting policies adopted in these financial statements are consistent with those of the previous financial year.

Changes in Accounting Policies

There have been no changes in accounting policies. All policies have been applied on bases consistent with those used in the previous year.

Specific Accounting Policies

All specific accounting policies have been applied on the same bases as those used in the full financial statements of the Trust.

Controlled Entity

The Gordon Allen Foundation Trust operates independently to Otago Community Hospice Trust. It receives donations, bequests and investment income and makes grants to support the Hospice. Certain investments owned by the Foundation are held in trust and are not available for the Hospice's operating activities.

OTAGO COMMUNITY HOSPICE TRUST

Summary Consolidated Statement of Comprehensive Revenue and Expenses
for the year ended 30 June 2021

	2021	2020
	\$	\$
Revenue		
Revenue from Non-Exchange Transactions	8,656,644	7,314,957
Revenue from Exchange Transactions	323,651	497,989
Total Revenue	8,980,295	7,812,946
Expenses		
Expenses	7,226,870	6,805,522
Total Expenses	7,226,870	6,805,522
Surplus for the year	1,753,425	1,007,424
Other Comprehensive Revenue and Expense	688,861	239,233
Total Comprehensive Revenue and Expense	2,442,286	1,246,657

Summary Consolidated Statement of Changes in Net Assets for the year ended 30 June 2021

	2021	2020
	\$	\$
Opening Balance at the beginning of the year	16,485,193	15,238,536
Plus Total Comprehensive Revenue and Expenses for the year	2,442,286	1,246,657
Closing Equity at the end of the year	18,927,479	16,485,193

The total comprehensive revenue and expense of \$2,442,286 includes the Foundation.
The net surplus for the Hospice before consolidation is \$1,123,176.

OTAGO COMMUNITY HOSPICE TRUST

Summary Consolidated Statement of Financial Position
as at 30 June 2021

	2021	2020
	\$	\$
Assets		
Cash and Cash Equivalents	1,851,395	2,399,546
Other Current Assets	5,976,798	5,157,195
Total Current Assets	7,828,193	7,556,741
Investments, Property, Plant, Equipment and Intangibles	12,137,417	10,505,304
Total Non-Current Assets	12,137,417	10,505,304
Total Assets	19,965,610	18,062,045
Liabilities		
Trade and Other Payables	226,280	676,855
Other Current Liabilities	811,851	868,842
Total Current Liabilities	1,038,131	1,545,697
Finance Leases Payable	–	31,155
Total Non-Current Liabilities	–	31,155
Net Assets	18,927,479	16,485,193

Summary Consolidated Statement of Cash Flows for the year ended 30 June 2021

	2021	2020
	\$	\$
Net Cash from Operating Activities	1,772,653	1,962,069
Net Cash used in Investing Activities	(2,257,678)	(1,369,630)
Net Cash used in Financing Activities	(63,036)	(63,036)
Net (Decrease)/Increase in Cash and Cash Equivalents	(548,151)	529,403
Cash and Cash Equivalents at 1 July	2,399,546	1,870,143
Cash and Cash Equivalents as at 30 June	1,851,395	2,399,546

OTAGO COMMUNITY HOSPICE TRUST

Auditors Report



Report of the Independent Auditor on the Summary Financial Statements

to the Trustees of Otago Community Hospice Trust

Our Opinion

The summary consolidated financial statements, which comprise the summary consolidated statement of financial position as at 30 June 2021, the summary consolidated statement of comprehensive revenue and expense, summary consolidated statement of changes in net assets and summary consolidated statement of cash flows for the year then ended, and related notes, are derived from the audited financial statements of Otago Community Hospice Trust for the year ended 30 June 2021. In our opinion, the accompanying summary financial statements are consistent, in all material respects, with the audited financial statements, on the basis described in the notes to the summary financial statements.

Summary Financial Statements

The summary financial statements do not contain all the disclosures required for the full financial statements. Reading the summary financial statements and the auditor's report thereon, therefore, is not a substitute for reading the audited financial statements and the auditor's report thereon.

The Audited Financial Statements and Our Report Thereon

We expressed a modified audit opinion on the audited financial statements in our report dated 18 November 2021.

Trustees' Responsibilities for the Summary Financial Statements

The Trustees are responsible for the preparation and presentation of the summary financial statements in accordance with PBE FRS-43: Summary Financial Statements.

Auditors' Responsibility

Our responsibility is to express an opinion on whether the summary financial statements are consistent, in all material respects, with the audited financial statements based on our procedures, which were conducted in accordance with International Standard on Auditing (New Zealand) (ISA (NZ)) 810 (Revised), *Engagements to Report on Summary Financial Statements*.

Other than in our capacity as auditor we have no relationship with, or interest in, Otago Community Hospice Trust.

Restriction on Distribution or Use

This report is made solely to the Trustees as a body. Our audit work has been undertaken so that we might state to them those matters which we are required to state to them in an audit report and for no other purpose. To the fullest extent permitted by law, we do not accept or assume responsibility to anyone other than the Trustees, as a body, for this report, or for the opinions we have formed.

A handwritten signature in blue ink that reads 'Audit Professionals'.

Chartered Accountants
18 November 2021

Dunedin



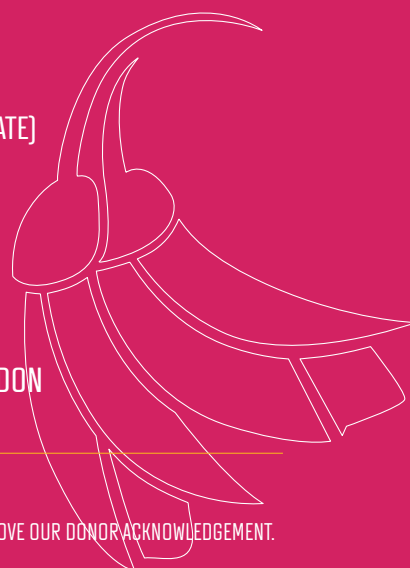
COMMUNITY SERVICE CLUBS

THIS YEAR WE HAD TERRIFIC SUPPORT FROM THE OTAGO-WIDE
COMMUNITY OF SERVICE CLUBS, WITH 19 SERVICE GROUPS.

TOTAL DONATIONS

\$66,696

BROOKLANDS VILLAGE CRAFT & FRIENDSHIP GROUP
CATHOLIC DIOCESE OF OTAGO SOUTHLAND
CATHOLIC WOMEN'S LEAGUE RANFURLY
COUNTRY WOMENS INSTITUTE PENINSULA BAYS
FORBURY PARK INDOOR BOWLING CLUB – SOCIAL CLUB
INNER WHEEL CLUB DUNEDIN
LIONS CLUB BALMACEWEN
LIONS CLUB GREEN ISLAND
LIONS CLUB MANIOTOTO
LIONS CLUB OF LAWRENCE
LIONS CLUB OF MILTON
LIONS CLUB OF TAIERI
LIONS CLUB OF TAIERI
OTAGO WOODTURNERS GUILD INC
PORTOBELLO BOWLING CLUB
PROBUS CLUB DUNEDIN LADIES (DUPLICATE)
ROTARY CLUB OF SOUTH DUNEDIN
TAIERI BRIDGE CLUB
WAIAREKA LIONS CLUB
WOMEN'S INSTITUTE OF ALLANTON
WOMEN'S INSTITUTE WAIHOLA/CLARENDON



* PLEASE LET US KNOW IF YOU SHOULD BE ON THIS LIST, AS WE ARE ALWAYS TRYING IMPROVE OUR DONOR ACKNOWLEDGEMENT.



293 NORTH ROAD | NORTH EAST VALLEY | PO BOX 8002 | DUNEDIN 9041
PHONE 03 473 6005 | FAX 03 473 6015
EMAIL contact@otagohospice.co.nz
WEB otagohospice.co.nz